



USER MANUAL

Air Automatic Pet Feeder

AIR

Automatic Pet Feeder

@Libro Corp. All Rights Reserved.

Model: PLAF008

Manufacturer: Shenzhen Libro Technology Co., Ltd.

Address: 12/F, Tower B, GALAXY WORLD, Yabao Road,
Longgang District, Shenzhen, China

JP Importer: 株式会社神州

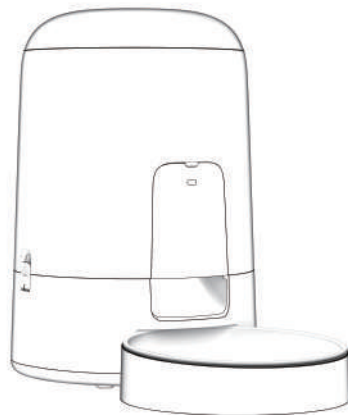
Made in China

PLAF008_V1.0

CAN ICES-3 (B)/NMB-3(B)



This device complies with Part 15 of the FCC Rules. Operation is subject to the following two conditions: (1) this device may not cause harmful interference, and (2) this device must accept any interference received, including interference that may cause undesired operation.



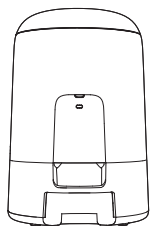
Please read this manual before using the product
and keep it for future reference.

CONTENTS

English

- 01** – IN THE BOX
- 02** – PRODUCT OVERVIEW
- 05** – GETTING STARTED
- 14** – CARE AND MAINTENANCE
- 14** – TROUBLESHOOTING
- 15** – SPECIFICATIONS
- 15** – SAFETY INSTRUCTIONS
- 16** – WARRANTY
- 17** – NOTICE

IN THE BOX



Automatic Pet Feeder

X1



Quick Start Guide

X1



Power Adapter

X1



Stainless Steel Bowl

X1



Bowl Tray

X1



User Manual

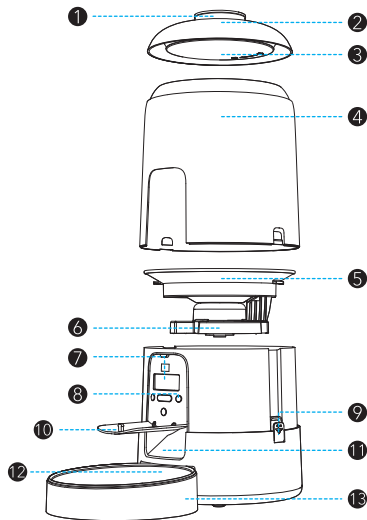
X1



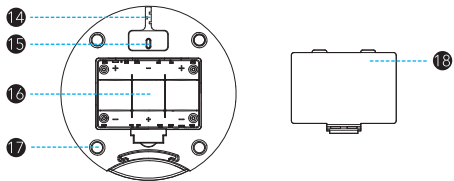
Power Cable

X1

PRODUCT OVERVIEW



1. Lid Release Button
2. Lid
3. Desiccant Bag Holder Lid
4. Food Tank
5. Tank Base
6. Rotor
7. LCD Display
8. Buttons
9. Food Tank Lock
10. Control Panel Cover
11. Food Outlet
12. Stainless Steel Bowl
13. Bowl Tray



- 14. Power Cable Slot
- 15. USB-C Power Port
- 16. Battery Compartment
- 17. Non-slip Rubber Pad
- 18. Battery Compartment Cover

LCD display

Battery status indicator

Light up when batteries are installed. A blank battery status indicator means low battery level

Light up when the rotor is stuck

Meal number



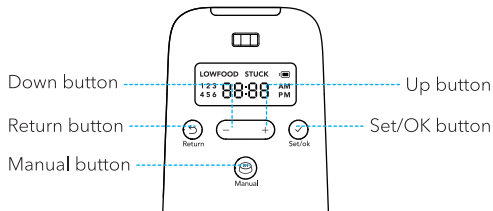
Before noon

After noon

Light up when the food storage level is low

Time or number of portions

Buttons

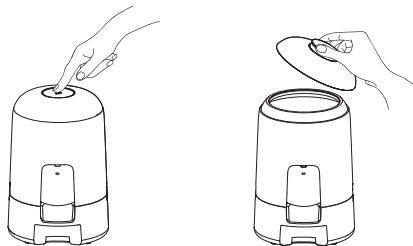


Buttons	Operation
 Manual	Press once to dispense one portion of food. You can press it up to five times rapidly at a time
 Return	Press to go back to the previous setting
 Set/OK	Press to confirm and go to the next setting
 Up/Down	Press once to select a different setting or increase/decrease the value. Press and hold for quick adjustments

GETTING STARTED

Installation

1. Press the lid release button and remove the lid.



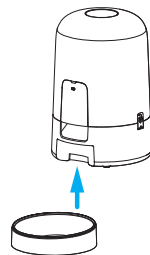
2. Add dry pet food to the food tank.



3. Replace the lid and press the lid release button.

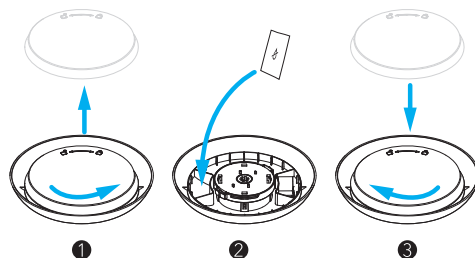


4. Install the stainless steel bowl and bowl tray.



Tip:

If you want to use a desiccant bag (not included), turn the desiccant bag holder lid counterclockwise, and place your desiccant bag (size: 35*20mm / 1.4*0.79in) into one of the desiccant bag holes. Replace the holder lid and turn the lid clockwise to finish installing your desiccant bag.

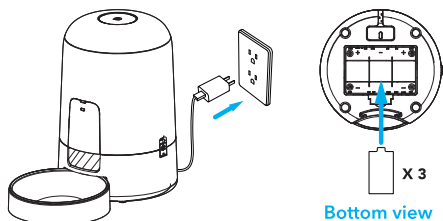


Power on

The feeder supports dual power modes.

Using the power adapter and power cable: Connect the feeder to a wall outlet and it automatically turns on and the LCD display will light up in white.

Using battery power: Install three D alkaline batteries into the battery compartment and the feeder automatically turns on.



Notes

- The LCD display will not stay on when using batteries or the power adapter.
- A battery status indicator shows up in the display after installing batteries.
- When the power adapter, power cable, and batteries are used at the same time, the feeder will only draw power via the power cable.


Power off

Unplug the cable from the outlet to power off. In battery power mode, remove the batteries from the feeder.

Time settings

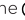

1. After the feeder is powered on, press the top of the control panel cover and the cover automatically opens. Press the  button to enter time settings.



2. Press the  button again and the hour digit flashes.




3. Press and hold the  button to set the hour and press the  button to confirm.

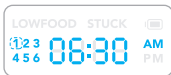
4. Use the  button and the  button to set the minute and select from "AM" or "PM."

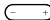
5. Press the  button to confirm.




Meal settings

1. After setting up the time, press the  button to enter Meal 1 settings.

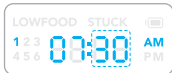
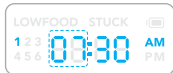


2. Press and hold the  button to set the hour and minute, select from "AM" or "PM", and set the portions.

3. Press the  button to confirm the Meal 1 settings.

4. Repeat the above step 2 to step 3 to set up Meal 2–6. If you want to set fewer than 6 meals, use the  button to select and customize a specific meal when one of the meal numbers flashes.

5. After setting up, replace the cover and push it in.



Note:

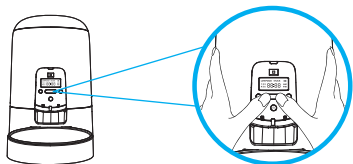
The maximum number of portions per meal is 16.

Recommended feeding portions


Model	Daily Intake	Meals per Day	Portions per Meal	Per Portion
PLAF008	1/2 cup	2	6	1/24 cup (10.4ml)
		3	4	
		4	3	
	1/3 cup	2	4	
		3	3 3 2	
		4	2	
	2/3 cup	2	8	
		3	5 5 6	
		4	4	
	3/4 cup	2	9	
		3	6	
		4	4 4 5 5	
	9/10 cup	2	11	
		3	7 7 8	
		4	5 5 6 6	
	1 cup	2	12	
		3	8	
		4	6	
	1 1/4 cup	2	15	
		3	10	
		4	7 7 8 8	
	1 1/2 cup	3	12	
		4	9	
	1 1/3 cup	2	16	
3		10 11 11		
12/3 cup	4	8		
	3	13 13 14		
	4	10		

Reset

Press and hold the Up button and the Down button for three seconds to reset the feeder to factory settings.



Manual feeding

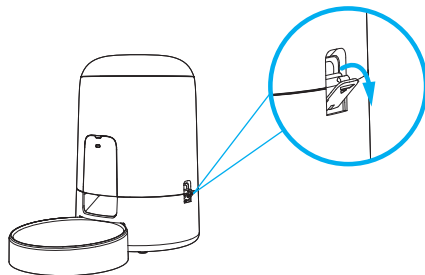
When the feeder is powered on, press the  button once and the feeder will dispense one portion of food. You can press the manual button up to five times and the feeder will dispense five portions of food.

Indicator

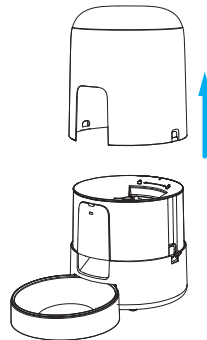
Indicator	Status
White on	Normal
Red flashes once every second with blank battery status indicator	Low battery warning
Red flashes once every second with "LOWFOOD" indicator	Low food storage level (less than 10% of the total capacity)
Red flashes once every second with "STUCK" indicator	The rotor is stuck

Disassemble for cleaning

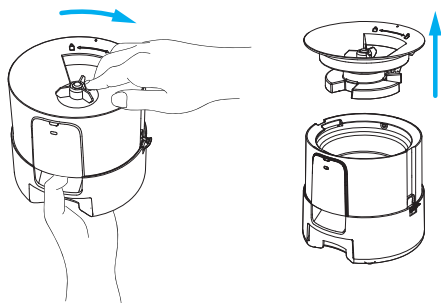
1. Pull the food tank locks outwards.



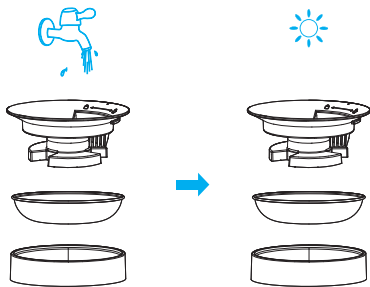
2. Lift the food tank cover.



3. Hold the tank base, turn the rotor clockwise, and lift the rotor.



4. Clean and air-dry the rotor and food bowl.



CARE AND MAINTENANCE

- Power off the device before cleaning.
- Clean the food bowl with tap water.
- Do not clean the feeder in a dishwasher. Only the stainless steel bowl is dishwasher safe.
- Use a soft damp cloth to clean the feeder base. Do not wash any part with electronic components.
- Replace the desiccant bag every half a month to keep food fresh.

TROUBLESHOOTING

- If a blank battery status indicator shows on the display, please replace the batteries.
- If there is a "LOWFOOD" indicator, refill the food tank.
- If there is a "STUCK" indicator, disassemble the tank base and remove any food that's stuck in the rotor.
- If the feeder is not dispensing food, make sure you have filled the tank with enough food.
- If the feeder won't turn on, check if the power adapter, power cable, or batteries are correctly installed.
- Please make sure the food in the tank is dry, and food size is within 2-15mm (0.07-0.6in) in diameter.
- If the food won't come out, remove the food tank and tank base, and check if the chute inside is blocked.
- If the food won't come out, check whether the battery level is low, whether the power adapter is connected, and whether a power outage occurs when the power adapter is connected but batteries are not installed.
- The first few portions may vary, but it doesn't mean it's faulty. After about 6 feedings, it should be almost even.

SPECIFICATIONS

Model	PLAF008
Input	AC 100-240V 50/60Hz
Capacity	2L
Battery power option	3 × D alkaline batteries
Dimensions	310 × 265 × 180mm / 12.2 × 10.4 × 7.1in
Weight	1.32kg / 2.91lb

SAFETY INSTRUCTIONS

- Dispose of all packaging materials properly. Some items may be packed in plastic bags; these bags could cause suffocation. Keep them away from children and pets.
- Do not use the feeder with pets that are not able to reach the food tray or with any physical disability.
- Do not immerse the base part in water at any time as it may damage electronic components like the control panel.
- Do not use the feeder outdoors. Check its operation frequently to be sure it is dispensing properly.
- Do not use wet, canned or moist food.
- Do not disassemble the feeder other than as instructed in this user manual.

- Only use accessories recommended or sold by the manufacturer. The use of accessories not recommended or sold by the manufacturer may cause an unsafe condition.
- Do not modify the pet feeder.
- Examine the feeder after installation. Do not plug in if there is water on the power cable or plug.
- To avoid tripping, always position the power cable out of the way of foot traffic.
- Do not install or store the pet feeder where it will be exposed to weather or temperatures below 4°C (39.2°F).
- Use D alkaline batteries to power the feeder. Do not use rechargeable batteries.
- Check the batteries regularly. Before leaving for an extended period of time, always replace batteries with new ones.
- Do not lift the pet feeder by the lid, food tank, or food bowl. Lift and carry it using both hands and the base, while keeping the feeder in an upright position.
- Suitable for dry food only, with kibble sizes ranging from 2-15mm (0.07-0.6in) in diameter. Larger kibble may get stuck at the food outlet.
- Do not put your fingers into the food outlet or let your fingers touch the rotor.
- Power off the device when it's not in use.

WARRANTY

- 12-month warranty
- For guidance on product use, please contact our customer service team via email:
support@petlibro.com.

NOTICE

FCC statement

This device complies with Part 15 of the FCC Rules. Operation is subject to the following two conditions:

- (1) this device may not cause harmful interference, and
- (2) this device must accept any interference received, including interference that may cause undesired operation.

Changes or modifications to this unit not expressly approved by the party responsible for compliance could void the user's authority to operate the equipment.

NOTE:

This equipment has been tested and found to comply with the limits for a Class B digital device, pursuant to Part 15 of the FCC Rules. These limits are designed to provide reasonable protection against harmful interference in a residential installation. This equipment generates, uses and can radiate radio frequency energy and, if not installed and used in accordance with the instructions, may cause harmful interference to radio communications. However, there is no guarantee that interference will not occur in a particular installation. If this equipment does cause harmful interference to radio or television reception, which can be determined by turning the equipment off and on, the user is encouraged to try to correct the interference by one or more of the following measures:

- Reorient or relocate the receiving antenna.
- Increase the separation between the equipment and receiver.
- Connect the equipment into an outlet on a circuit different from that to which the receiver is connected.
- Consult the dealer or an experienced radio/TV technician for help.

This device and its antenna(s) must not be co-located or

operated in conjunction with any other antenna or transmitter.

Radio frequency exposure statement

To maintain compliance with the FCC's RF Exposure Guidelines, this equipment should be installed and operated with a minimum distance of 20cm from your body.